

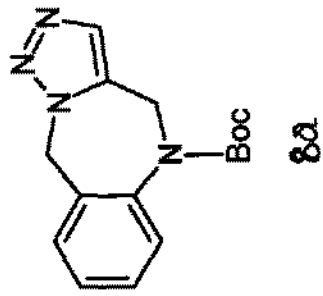
7.48
7.29
7.27

5.54

5.02

1.41

0.00



5.06

2.03

1.90

9.03

8.0

7.5

7.0

6.5

6.0

5.5

5.0

4.5

4.0

3.5

3.0

2.5

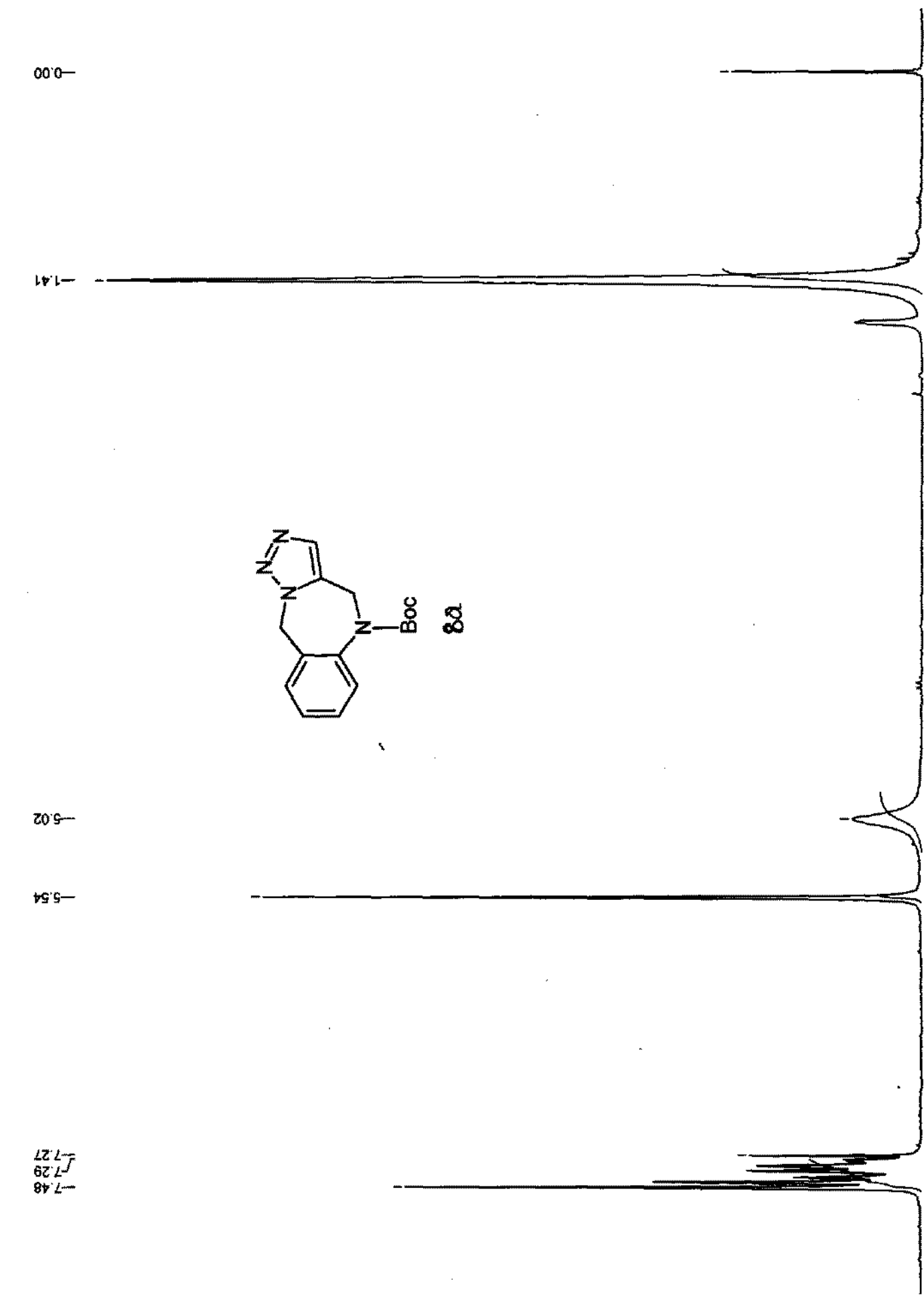
2.0

1.5

1.0

0.5

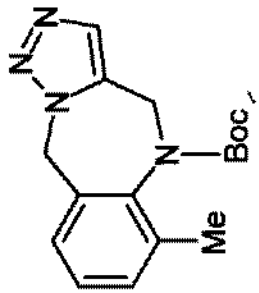
0.0



4.16
4.20
4.26
4.30

5.39
5.42
5.44
5.48
5.60
5.64
5.84
5.88

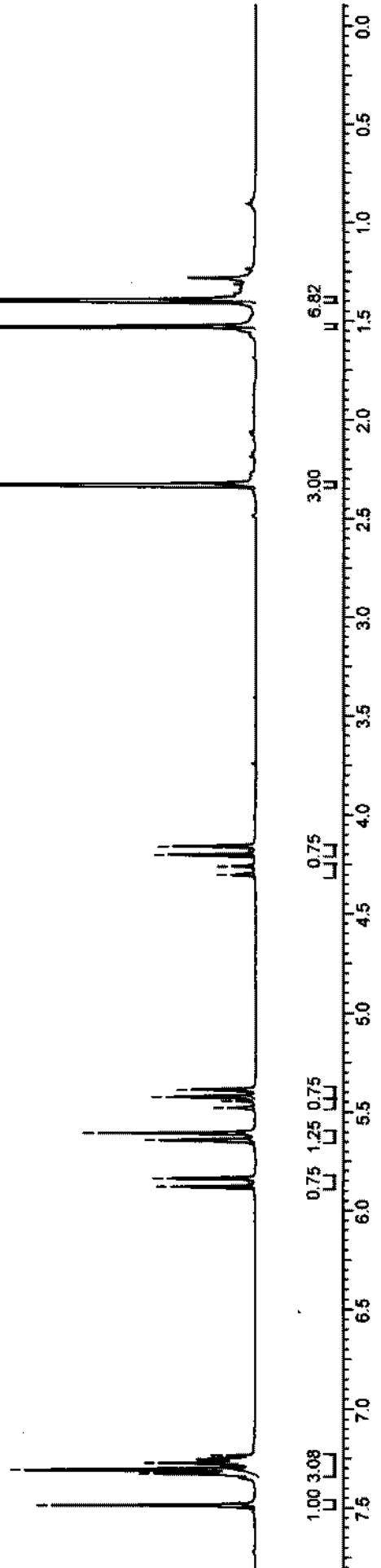
7.23
7.27
7.30
7.32
7.48



8b

1.53
1.39

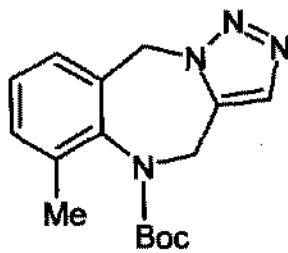
2.33



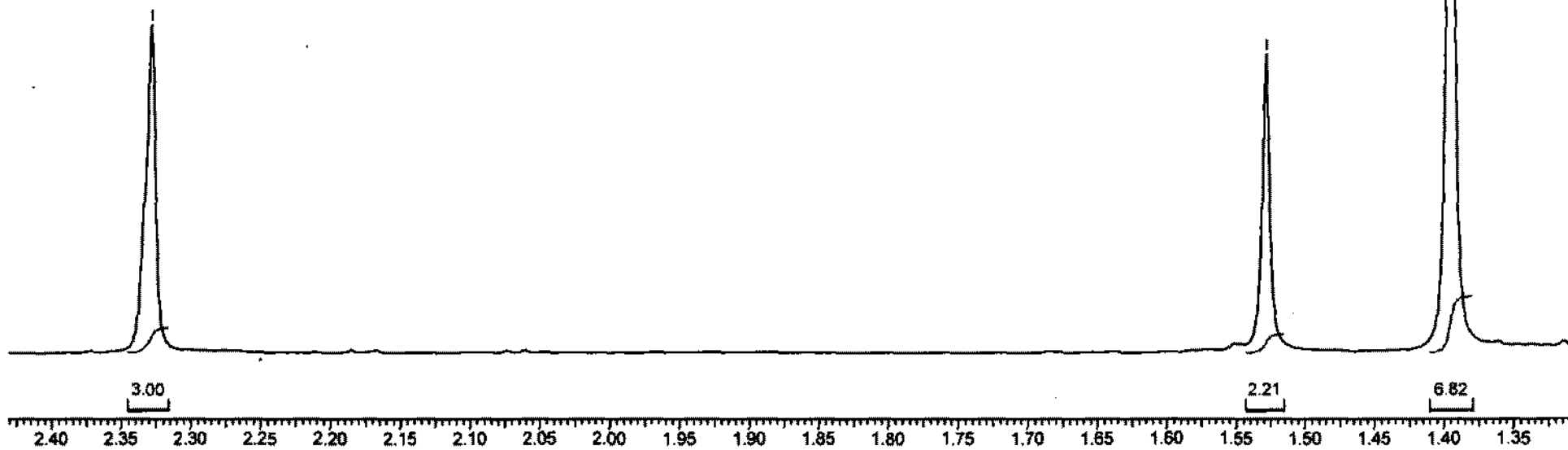
-2.33

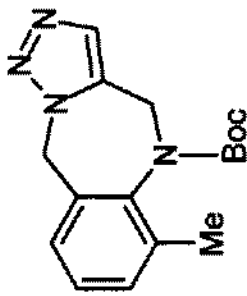
-1.53

-1.39

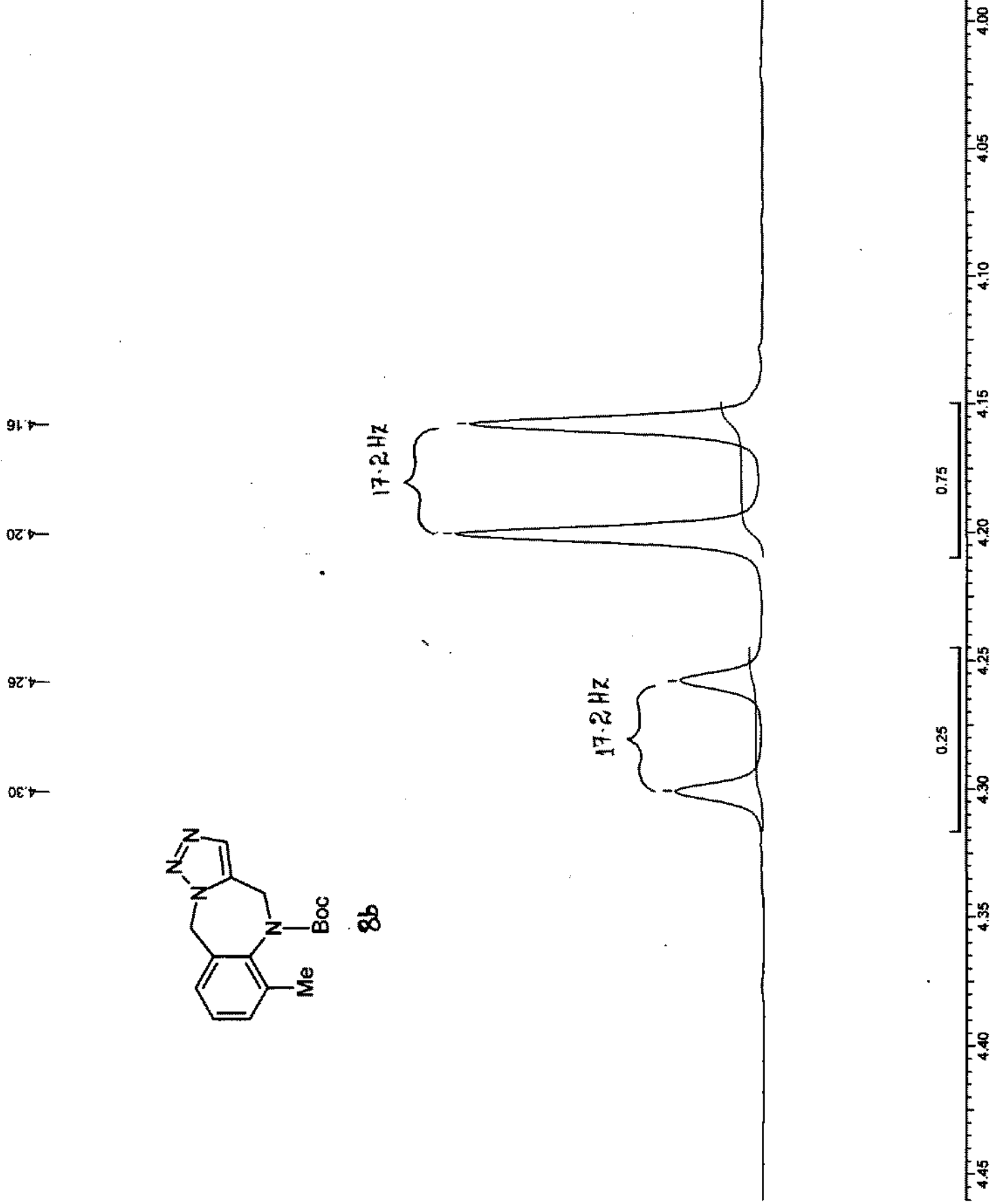


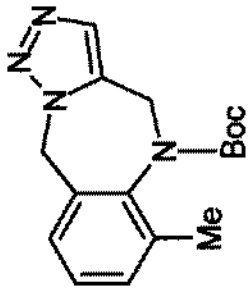
8b





8b





8b

5.39

5.42

5.44

5.48

5.60

5.64

5.84

5.88

14.3 Hz

14.3 Hz

17.2 Hz

0.75

0.25

1.25

0.75

6.00

5.95

5.90

5.85

5.80

5.75

5.70

5.65

5.60

5.55

5.50

5.45

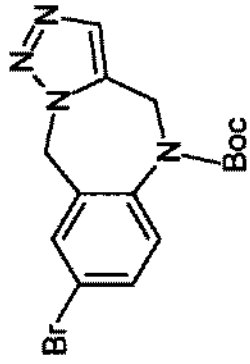
5.40

5.35

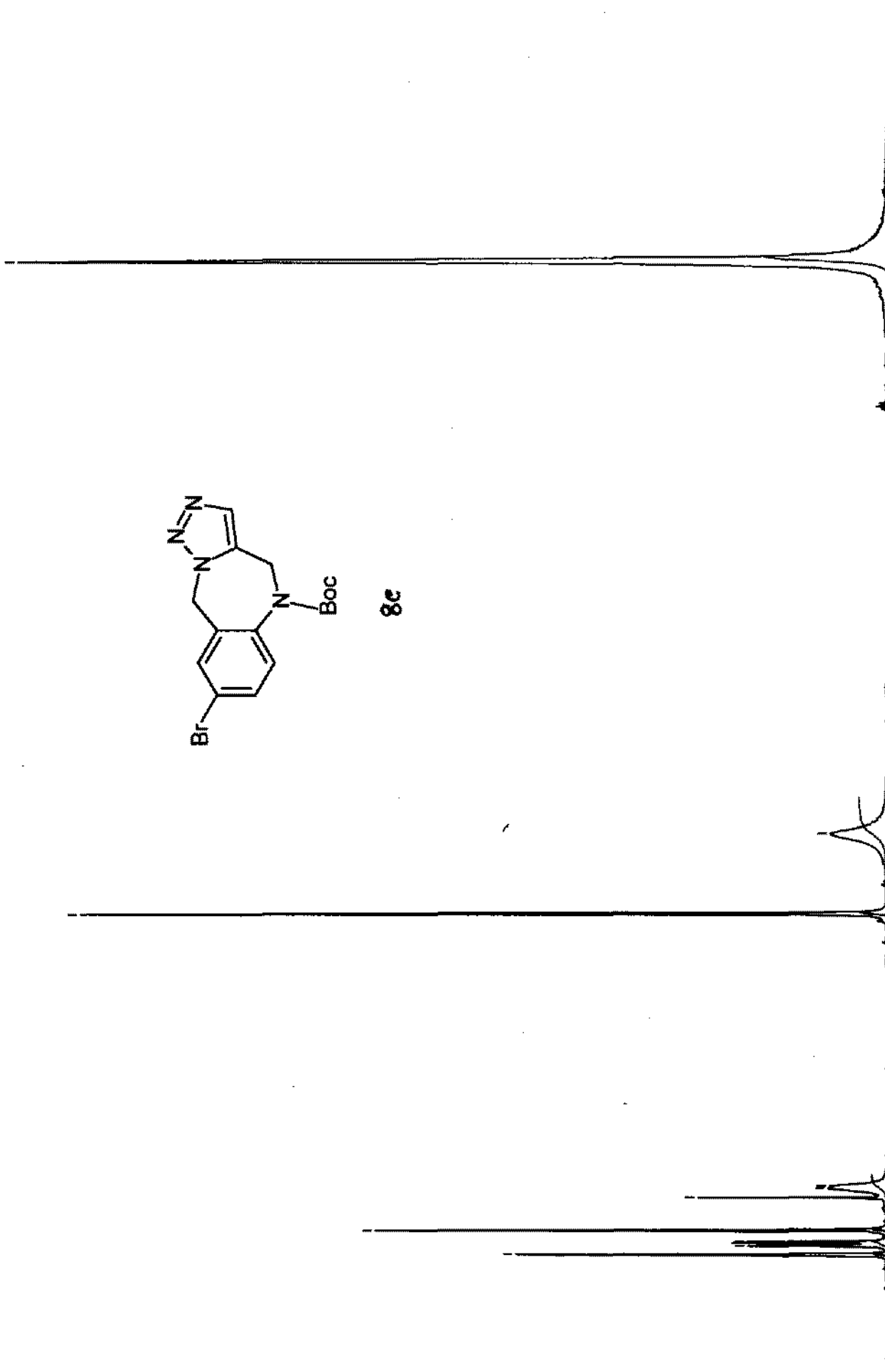
7.83
7.62
7.57
7.55
7.47
7.27
7.21
7.20

5.49
5.00

1.41



8c



1.03 1.00

2.08 1.94

9.02

8.0

7.5

7.0

6.5

6.0

5.5

5.0

4.5

4.0

3.5

3.0

2.5

2.0

1.5

1.0

0.5

0.0

7.47
7.42
7.38
7.29
7.27

5.49
5.00

1.41

